



Capitalize...
the energy of the sun

Our technological know-how and infrastructure expertise to develop tomorrow's clean energy

NTF-Energy has put its first plants into production and is developing its solar infrastructure model globally



NTF-ENERGY (US Office)
91A Spring bars road
Falmouth 02540 MA
+1 617 318 4811

NTF-ENERGY (HQ)
6 Lincoln street
75008 Paris
+33 1 77 32 12 05

Capitalize... The energy of sun !

Version 24082021

1

NTF-ENERGY presentation

Launched in 2011, **NTF-ENERGY** is a recognized player in the field of design and development of solar plants. Through offices in Paris and in the United States, **NTF-ENERGY** is an Independent Power Producer (IPP).

With its multidisciplinary teams, **NTF-ENERGY** selects the land and carries out the administrative, land, technical, financial and legal studies necessary for the overall feasibility. As soon as the financial assessment is validated, the company develops the project on its behalf or in an advisory mode.

NTF-ENERGY maintains a network of technical partners, consulting firms, installers, consultants and suppliers who work with its own teams to build the solar power plants to the highest standards of quality and reliability.

NTF-ENERGY currently operates a park of more than twenty-five power plants and has carried out in an advisory mode large-scale projects on buildings and in a ground-mount capacity.

NTF-ENERGY has developed its proprietary solar park management solution (PV Manage by NTF-ENERGY (r)), allowing optimization of monitoring and better technical to financial optimization.

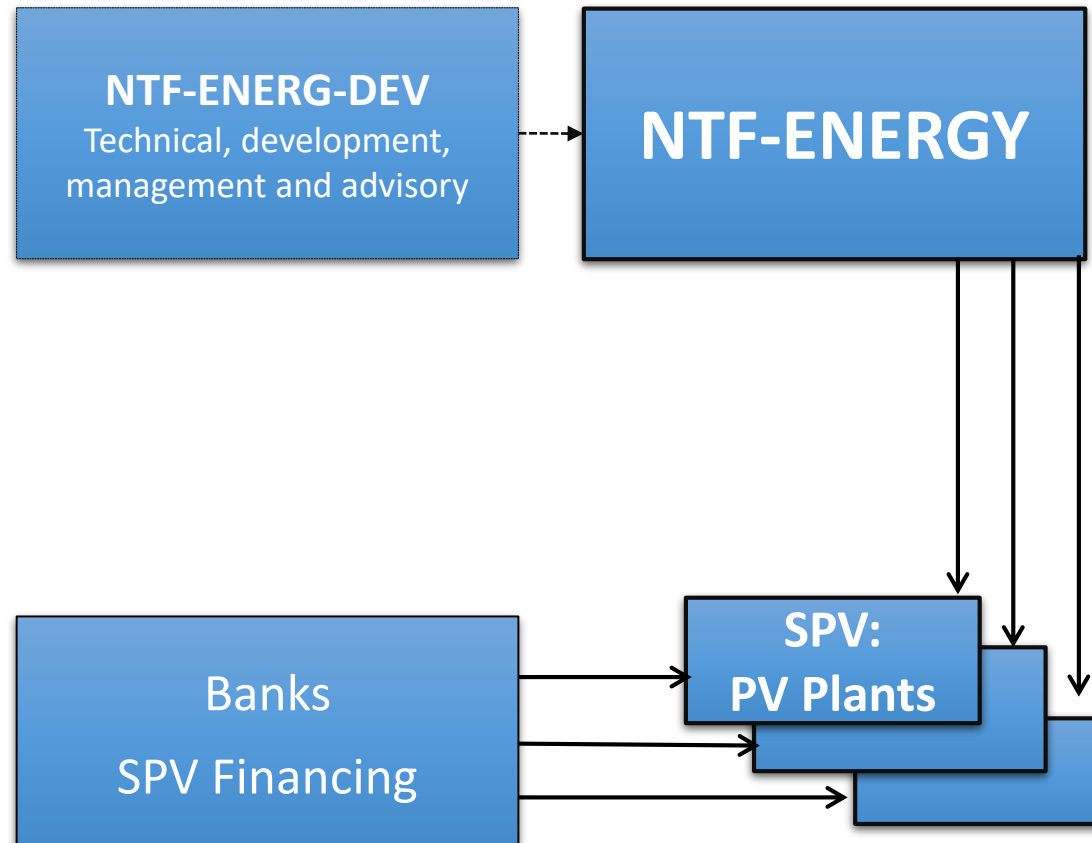
NTF-ENERGY is organized as a corporation with a fully-paid capital of one million euros.

Key points



- A first phase of development and active ownership has consolidated the global execution capability of the team;
- From inception in 2011, the team has developed a strong technical, operational and financial expertise in its field;
- Our first solar plants in Europe are currently in production : 25 PV plants are in our portfolio in France; and an equivalent number are under development (FY1 2021);
- In the US, we have completed and put into production 6 PV plants;
- Our team has completed several large scale PV plants in the US and Europe in a advisory mode;
- As of December 31, 2020, the solar park had a capacity of 10,387 MW. At the end of 2023, the Pluriannual Energy Programming (PPE) aims at 20 100 MW, which will imply the connection of an average of 3,300 MW/year over the next three years;
- The existing portfolio has steady and regular revenues with a secured revenue for the next 20 years thanks to the long term contractual FIT (Feed-In-Tariff) agreements secured.

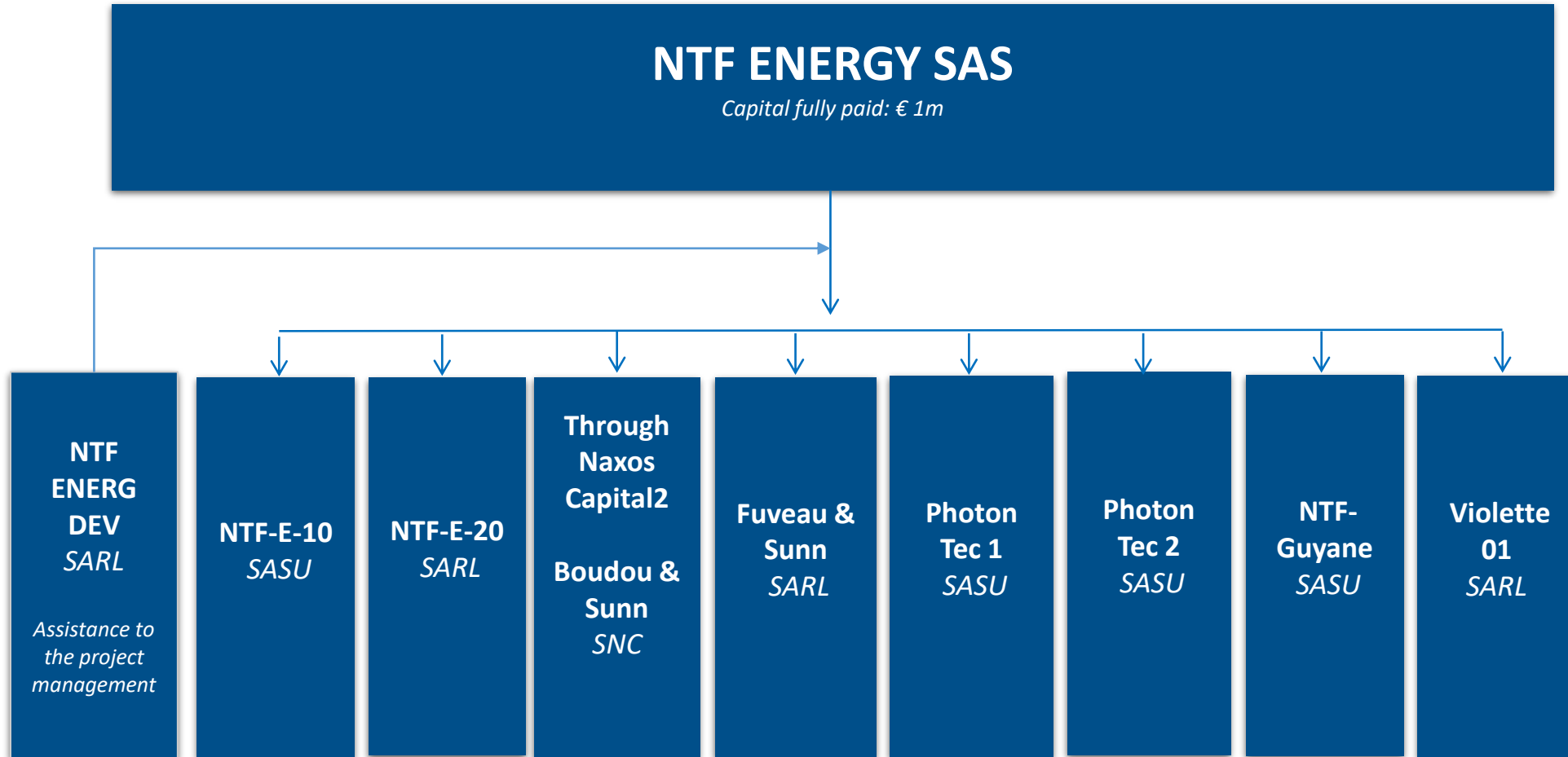
Organizational structure



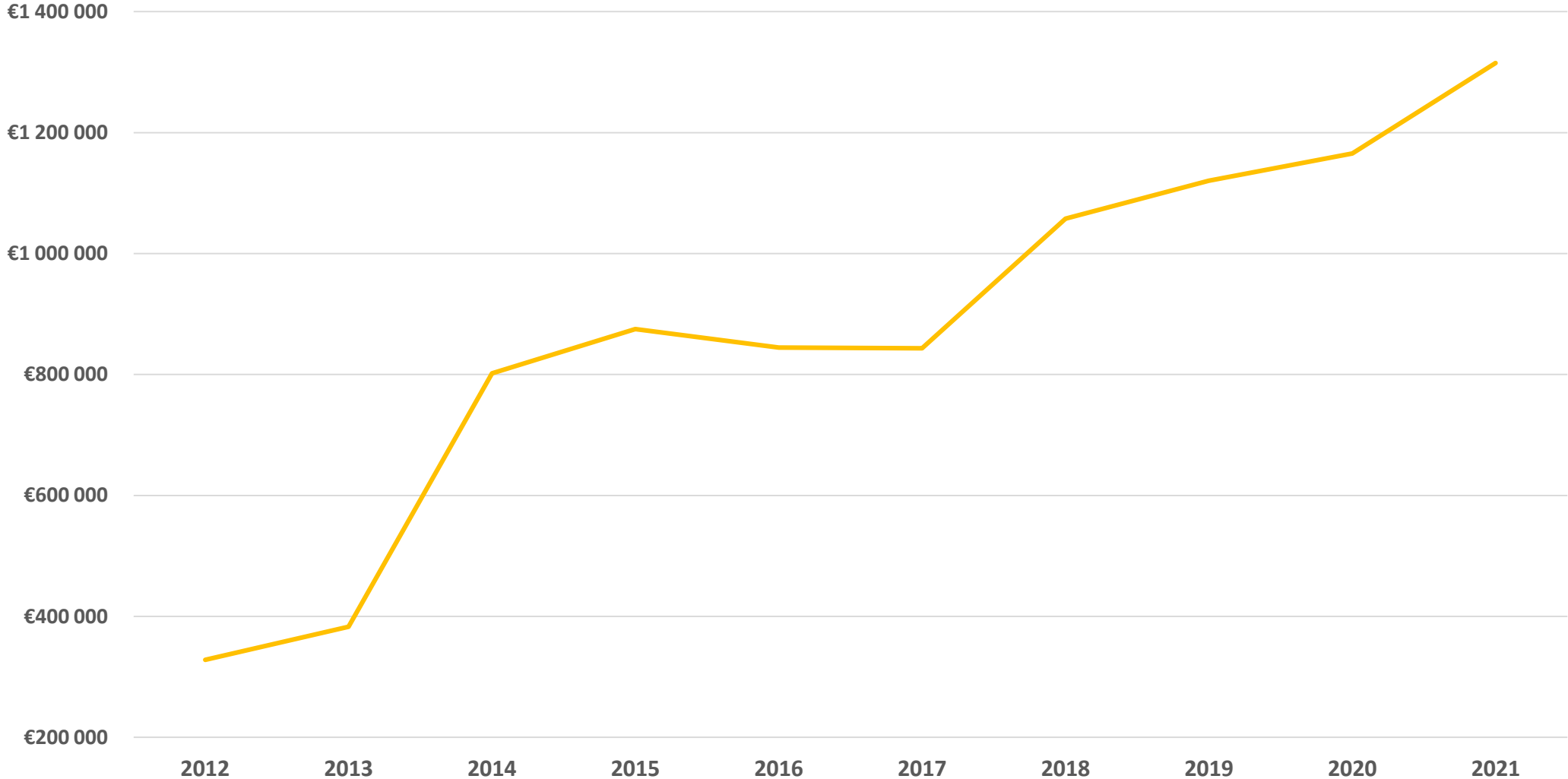
Senior management team

- **Maurice KHAWAM** : President, Business Strategy – Team management
- **Christophe CUSSON** : Director of Strategy and Financing
- **Afaf BOUAZZA** : Manager, Administration and Finance
- **Tanguy JANNIN** : Development and business manager
- **Joel IRVING** : General Manager US

Organigram of NTF-ENERGY Group



Evolution of turnover - NTF-Energy & subsidiaries



NTF-ENERGY : Managed entities (partial list)

NTFE - SPVs and managed entities			
Entities	Localisation	Power (kWp)	Description
Boudou	France	157	Buildings with PV roofs Due diligence for the purchase of the power plants, debt renegotiation, financial package
Fuveau	France	235	Warehouses Design, engineering, construction manager, construction, financial arrangements
PHT1	France	1 100	Agricultural sheds Design, engineering, construction manager, works, financial package
PHT2	France	500	Agricultural sheds Design, engineering, construction manager, works, financial package
NTF-E-20	France	392	Buildings with PV roofs Due diligence for the purchase of the power plants, debt renegotiation, financial package
Violette 01	France	246	Buildings with PV roofs Due diligence for the purchase of the power plants, debt renegotiation, financial package

NTF-ENERGY : Entities in development (partial list)

NTFE - Development in progress			
Project	Localisation	Power (kWp)	Description
N-10	South of France	329	Agricultural sheds Design, engineering, construction manager, works, financial package
N-10	Guyana	1000	Photovoltaic power plants on roofs Turnkey acquisition, monitoring of project progress, from construction to commissioning

Advisory Services

NTFE – Advisory Services			
Entity	Localisation	Power (kWp)	Description and relevant PV experience
Falmouth	Massachusetts-USA	84	<p style="text-align: center;">Offices</p> Design, engineering, lead construction, operation, equity participation, debt raising
Lawrence 1 & 7	Massachusetts – USA	200	<p style="text-align: center;">Industrial Buildings</p> Design, engineering, lead construction, operation, equity participation, debt raising
Epsom	New Hampshire-USA	180	<p style="text-align: center;">Commercial Buildings</p> Design, engineering, lead construction, operation, equity participation, debt raising
Portfolio under development	Mid-Atlantic	400	<p style="text-align: center;">Commercial Buildings</p> Design, engineering, lead construction, operation, equity participation, debt raising

Development Methodology

	Development (1 to 6 months)				Construction (2 to 12 months)		Plant management (15 to 30 yrs)	
	Pre-study	Real estate	Study	Financing	Execution	Delivery	Maintenance	Partnership
Process	Faisability study	Lease negotiation	Impact study	Design plans and financing package	Construction of the PV plant	Warranties and hand over of the as-built Manuals	Monitoring is put in place	Optimize the value chain of monitoring and maintenance
Delivrable	Technical and financial pre-study	Lease	Permits and FIT commitments	Bank commitment	Staged and global delivery	Feed in tariff granted	Maintenance & management contracts	Iterate control: improvements
Ressources	NTF-Energy Team	NTF-Energy, Notary, Counsels	NTF-Energy, Consultants, Counsels	NTF-Energy, Banks, Counsels	NTF-Energy, Banks, Vendors		NTF-Energy, Banks, Vendors	

APPENDIX

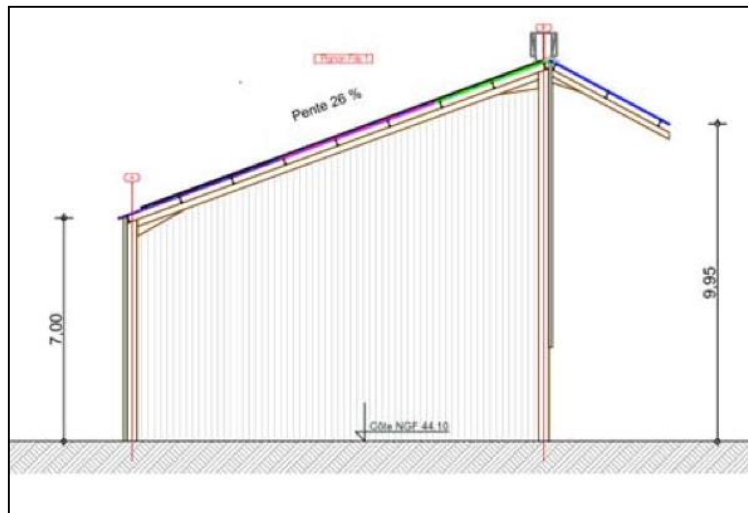
Global Development - Design thru commissioning – (1/3)

- Portfolio of Agricultural buildings (France – South East)
- Annual turnover (1st year estimation based on a producible of 1534 kWh/kWp and a feed in tariff of 10,94 ct€/kWh - revenue scenario for two 2 buildings) : **33 k€**
- Commissioning : **S1 2021 thru FY2023**
- Development, Engineering, analysis, financing and implementation of the project
- Design and follow-up of the technical and implementation studies, including execution plans , detailed plans, equity and debt financing thru construction of the Photovoltaic Power plants then supervision



Global Development example - Design thru commissioning – (2/3)

- Monitoring and control of the execution of contracts with stakeholders
- Follow-up / verification / control of the progress of works including supplies and services
- General coordination of the operation
- Compliance by independent auditors for the overall conformity of the design and implementation



Global Development example - Design thru commissioning – (3/3)

- Realization of the technical documentation (DT) and the file of realized works (DOE) containing in particular: all plans, diagrams, studies, calculations, certificates, guarantees, user manuals and production tests allowing the operation and the maintenance of the power plants under the best conditions
- Obtaining the validation of the control office, Consuels, purchase contracts and authorizations necessary for the start of production of the photovoltaic power stations
- Organization, monitoring and control of the reception of photovoltaic plants and commissioning tests
- Commissioning and monitoring of plants
- Plants maintenance for the duration of the purchase contract

Secondary Acquisition

- 400 kWp roof solar power plant in South Est (France)
- Annual turnover (forecast) : **240 k€**
- Full integration of the portfolio of 5 PV plants by NTF-ENERGY in **Q1 2020**



Bid submission - Middle East

- Ground-mount solar power plant of **100 MWp**
- Formation of a partnership between **NTF-ENERGY** and a leading local partner
- Annual turnover : **11 m\$**
- Technical, financial, contractual and administrative studies under submission
- Date of decision: **In progress**